

ECOSSISTEMAS MARINHOS, UM PATRIMÓNIO A DESCOBRIR...





**OS AMBIENTES GEOLÓGICOS
CONSTITUEM A BASE DE
SUSTENTAÇÃO DO MUNDO VIVO...**



Ophicomina nigra

Nassarius
reticulatus



***Nucella
lapillus***



(postura)



Patella sp.

Fucus sp.



Ulva sp.

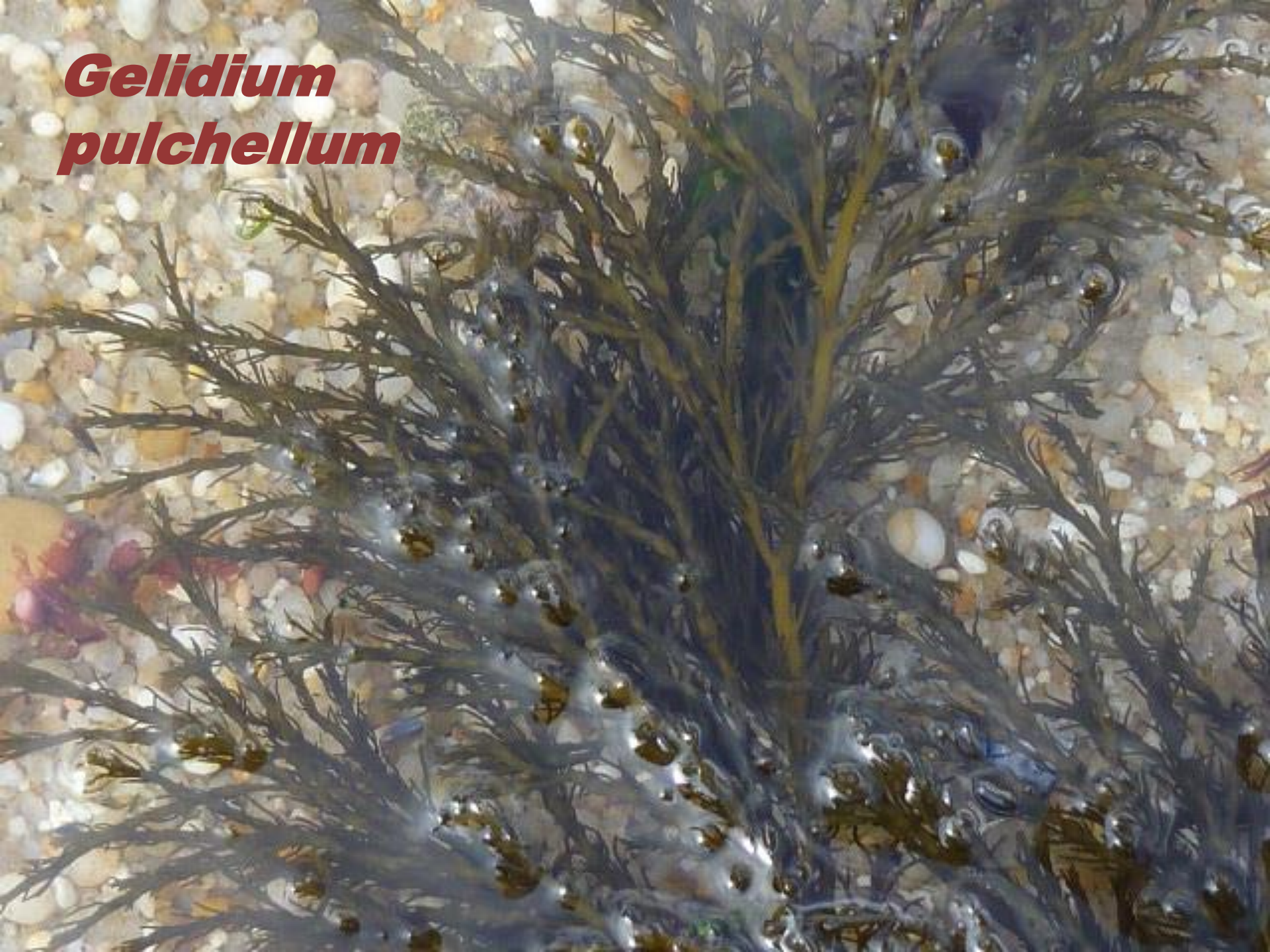


Ulva
clathrata



***Codium
tomentosum***

***Gelidium
pulchellum***



***Laminaria
hyperborea***



Porphyra
dioica





***Bifurcaria
bifurcata***



***Stypocaulon
scoparium***

Corallina sp

An underwater photograph showing a dense colony of Chondria coerulescens coral. The coral has a complex, branching structure with many thin, blue-tinted polyps. It is surrounded by other marine life, including green algae and brownish seaweed. The water is clear, and sunlight filters through from above, creating a bright, natural environment.


***Chondria
coerulescens***



***Lithophyllum
lichenoides***



***Lithophyllum
incrustans***



Mytilus sp

***Monodonta
lineata***

***Chthamalus
stellatus***

Lithorina sp.





***Patella
vulgata***



***Lichina
pygmaea***



Aplysia punctata

(postura)



A close-up photograph of a Pandalus montagui shrimp. The shrimp is positioned in the center-left of the frame, facing left. It has a translucent body with dark, wavy vertical stripes. Its long antennae are extended forward. The shrimp is resting on a light-colored, textured rock surface. To the right of the shrimp, there is a large, dark green, leafy piece of seaweed. Below the seaweed and to the right of the shrimp, there is a patch of small, pinkish-purple, branching marine life. The overall scene is a naturalistic underwater or intertidal environment.

Pandalus montagui

Pattela sp

A photograph of a Blennius pavo fish, a species of blenny, resting on a light-colored, textured rock surface. The fish has a brownish-gold body with numerous small white spots and a prominent white stripe running horizontally along its side. Its head is slightly raised, and its eyes are visible. To the left of the fish, there are two large, dark, rounded objects, likely sea shells. To the right, there is a large, green, leafy piece of seaweed. The background is a mix of light-colored rock and some darker, possibly algae-covered, areas.

Blennius pavo



Paracentrotus lividus

(ouriço do mar)

**Aloja-se
frequentemente
em cavidades
forradas por
*Lithophyllum
incrustans***



Estrela-do-mar



Asterias rubens



Quítone
Acanthochitona crinatus

Patina pellucida

(forma juvenil)





Nereis diversicolor



***Anemonia
sulcata***

Actinea equina





Halichondria panicea
(Porífera)

Galathea strigosa





Para além da sua biodiversidade e importância socio-económica como fonte de recursos alimentares e energéticos, o mar apresenta um excelente potencial para a investigação, para a medicina e para todas as áreas do conhecimento.